



10–14 June 2019



Gaveston Hall
In2action Residential Trip



What will this meeting cover?



1. Who In2action are & where Gaveston Hall is
2. The benefits of residential trips
3. Why we chose Gaveston Hall
4. What we will do there.
5. Where we will stay.
6. What we will eat.
7. What you should pack.
8. Departure & return
9. General information



About In2action



- We were created in 2004 and have a highly skilled team with over 75 years combined experience
- We operate high quality schools residential and adventure courses
- In2action currently work within childcare facilities around the world in 18 countries alongside First Choice and Canvas Holidays, and in the UK with Center Parcs
- We are proud to provide pupils and teachers alike with unforgettable experiences and fantastic memories through our commitment to quality and our dedicated and professional staff team

Safety and Security



- Gaveston Hall was awarded with the BAPA approved Learning Outside The Classroom (LOTG) Accreditation.
- National Governing Body Qualifications: (GNAS Archery, BSAC Snorkelling).
- Risk Assessments: all activities, operational areas, operating procedures and equipment are safety checked and risk assessed as part of our safety management policy.
- Site Security & Supervision: In2action Duty Manager on patrol until 11pm and on call 24 hours.
- Fire Drills: groups are shown the procedure on arrival.
- Staff are trained in First Aid and procedures are in place.



Accreditations

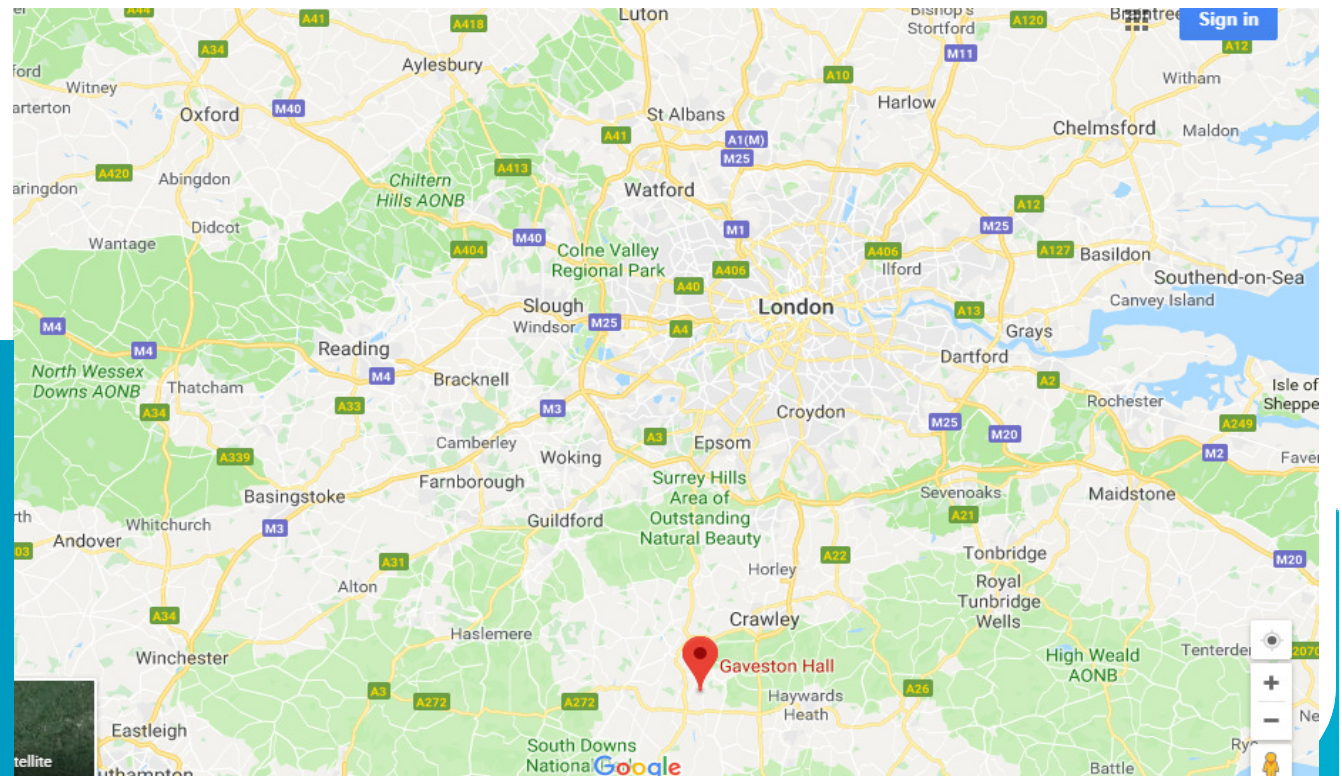


Where is Gaveston Hall?

- Heart of secluded Sussex countryside
- Tucked away in the village of Nuthurst
- Surrounded by 100 acres of private woodland, meadows, lakes and streams.
- approximately 2 hour

Address:

Gaveston Hall,
Nuthurst Rd,
Nuthurst,
Horsham, West Sussex,
RH13 6RG



What are the benefits of residential trips?

- Build confidence
- Team building
- Personal and social development
- Learn new skills / enjoy new experiences
- Develop independence ready for secondary school
- Memories that last a lifetime

FUN!



Why did the staff choose Gaveston Hall?

- Reasonable distance away
- ONLY school on the site
- Range of fun activities/facilities
- Safe and secure environment
- Lovely staff



What will happen on the day of departure?

- Children will arrive at school at normal time.
- If weather permits, children will leave their bags on the grass outside the office.
- Medication should be handed to Mrs Smith.
- Children to say goodbye to their parents and go to registration as normal.
- We should leave school around 11am. It will take approximately 2 hours, however, we plan to stop for lunch so please ensure your child has a disposable lunch.
- We will inform the school office of our arrival; this will be communicated through the school website.



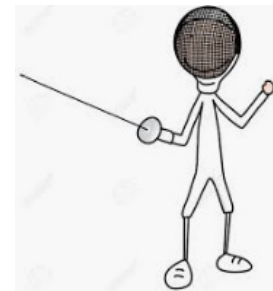
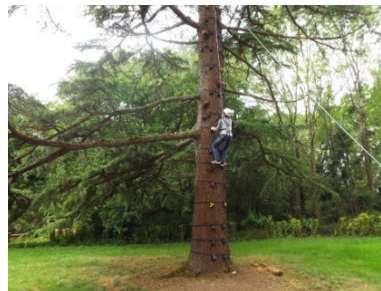
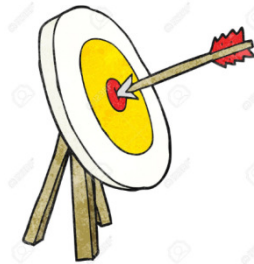
What will we do there?



The types of activities on offer are:

Day time:

- Archery
- Hover boarding
- Tree climbing
- Low ropes
- Fencing
- Circus workshop
- Bush-craft
- Sports & games
- Street dance
- Body zorbing
- Water wars
- Canoe games
- Aeroball
- Karting



Evening:

- Disco
- Beat the elite
- Scrapheap challenge
- Campfire

Where will I stay?



- Chalet style or Dormitory accommodation
- Ample storage space
- Teachers adjacent to children
- Additional keys for Party Leaders
- Beautiful countryside setting
- Maximum 90 students on site
- Rooms are large and lockable

What will I eat?

- Well balanced meals provided
- Vegetarian options and special dietary requirements catered for
- All meals are provided in the In2action schools dining room
- In2action Instructors will sit and chat and eat with the group



What will I eat?

MONDAY	TUESDAY	WEDNESDAY	THURSDAY	FRIDAY
BREAKFAST				
	Choice of Cereals with Milk Toast with Jam Marmite or Chocolate Spread Fruit Yoghurts Tea, Coffee, Water & Squash	Choice of Cereals with Milk Toast with Jam Marmite or Chocolate Spread Fruit Yoghurts Tea, Coffee, Water & Squash	Choice of Cereals with Milk Toast with Jam Marmite or Chocolate Spread Fruit Yoghurts Tea, Coffee, Water & Squash	Choice of Cereals with Milk Toast with Jam Marmite or Chocolate Spread Fruit Yoghurts Tea, Coffee, Water & Squash
LUNCH				
	Choice of Sandwiches: Cheese, Jam, Tuna Mayo, Ham or Egg Mayo Fresh Fruit Cake or Biscuit Water & Squash	Choice of Sandwiches: Cheese, Jam, Tuna Mayo, Ham or Egg Mayo Fresh Fruit Cake or Biscuit Water & Squash	Choice of Sandwiches: Cheese, Jam, Tuna Mayo, Ham or Egg Mayo Fresh Fruit Cake or Biscuit Water & Squash	Choice of Sandwiches: Cheese, Jam, Tuna Mayo, Ham or Egg Mayo Fresh Fruit Cake or Biscuit Water & Squash
DINNER				
Fish Fingers (Fish for Teachers) Chips Baked Beans (Pizza - For non-fish eaters) Ice cream (Dairy free available) Tea, Coffee, Water & Squash	Cheesy Pasta Bake Peas/Sweet corn/Broccoli (Jacket Potato with Cheese for non-pasta eaters) Chocolate Gateaux or Chocolate Brownie or Sticky Toffee Pudding Tea, Coffee, Water & Squash	Sweet & Sour Chicken (or Quorn) with rice Mixed Vegetables or Salad Jam Sponge with Custard Tea, Coffee, Water & Squash	Pork (or Vegetarian) Sausages Chips or Jacket Potato Salad Grated Cheese Cornetto or Ice lollies Tea, Coffee, Water & Squash	



What should I pack?

- You pack contains kit list – old, suitable clothing is best. One smarter outfit for disco if you wish.
- Valuables should remain at home eg phones, kindle, smart watches, jewellery.
- Children can bring a disposable camera. Children must ask permission of others (including teachers) before they take a picture!
- Children can bring pocket money to buy souvenirs with (maximum £10) in a named purse please!





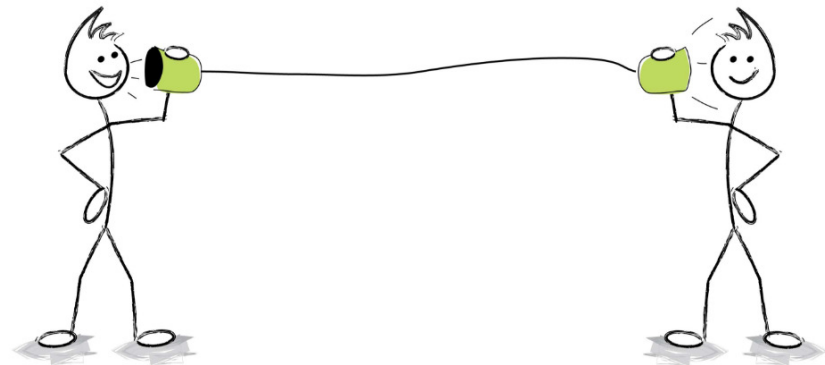
Please let us know if...

- Your child needs a nightlight.
- Your child has any medicines. Please collect a yellow form from Ms Martin and return to the school office by 24 May if not sooner.
- It is your child's birthday while we are away.
- Your child suffers from travel sickness.
- There is anything else you may be worried about!

It isn't a problem, just helps if we know in advance!

Communication

- Phones/electronic equipment should remain at home – this is the perfect chance to spend a week 'offline'
- We will send regular updates and photos to the school office. These will be shared on the school website.
- We will have parents contact information in case of emergency
- We will leave Gaveston Hall at approximately 2pm and we will keep the office informed of our return journey.





You can help by...

- Asking your child to have an active role in packing their things so they know what they have brought with them.
- Returning the forms in your packs by 24 May.
- Talking positively about the experience with your child.
- Talking to your child about personal care.
- Naming everything!



What now?

Please fill in and return all forms in your pack including:

- Code of conduct
- Permission form
- Medical forms- only if additional medication is required

Please complete and return these by 24 May.

Please note: we will organise rooms and activity groups closer to the date.

- Gaveston Hall contact no. – 01403 891 431 (only to be used in emergencies please!).

Thank you for coming!

